



Trash Free
MARYLAND

General Assembly 2020 Look Ahead

Baltimore City Sustainability Commission
November 20, 2019
Ashley Van Stone



Overview

Plastics and Packaging Reduction Act

Sponsored by Delegate Lierman and Senator Augustine

- Part 1: Statewide plastic bag ban/other bag fee
- Part 2: Work group to holistically look at products



Bag Regulation

- Ban plastic carryout bags less than four mils thick and compostable plastic carryout bags
- Place a .10 fee on paper and other material bags at point of sale
- Retailer retains the fee
- Applies to to-go food bags from restaurants, other retail (i.e., apparel and home goods)
- Common exemptions (non-handled, non point of sale)
- Voucher holders
- Take effect July 2020



The Rundown

- Why a ban/fee structure → eliminate the worst polluters, while the fee will drive behavior change
- Consistency statewide is key → state bill as the floor for an overall structure
- Not a tax!
- Recycling not the answer: only 1% get recycled, and does not address enviro/health impacts of production
- Business friendly: they'll save money over time as consumption decreases, plus recover some cost

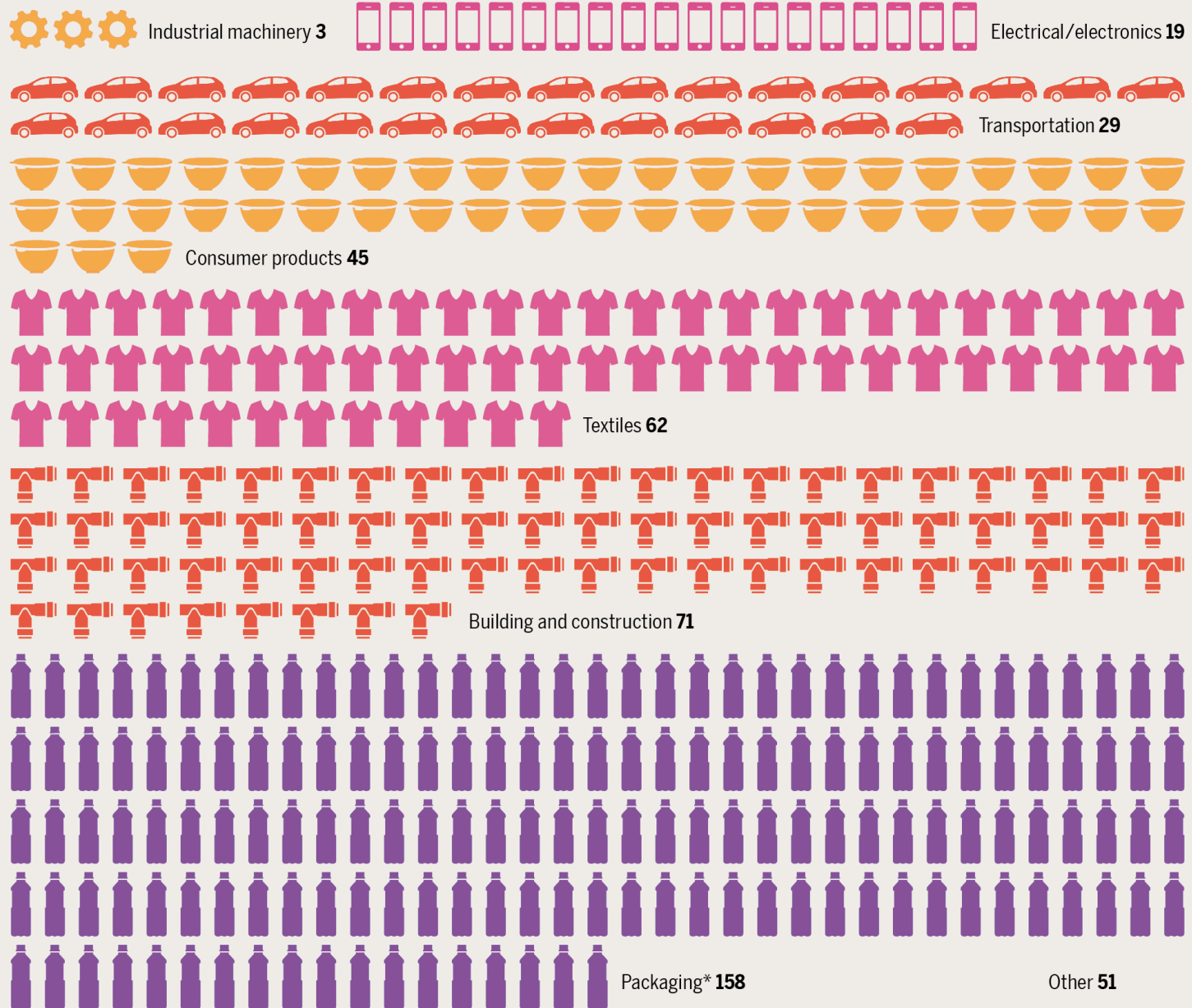


Single Use Packaging Work Group

- Will examine beverage containers, straws/stirrers, condiment packets/containers, toiletries, snack packaging, to-go packaging etc.
- Account for production, consumption and disposal: litter and diversion
- Identify comprehensive approach: multi-pronged strategy
- Defined composition: elected officials, solid waste industry, environmental advocacy community, scientific expertise, business sector, residents
- Two public hearings
- Deliver a plan by December 2020

WHAT DO WE USE PLASTIC FOR?

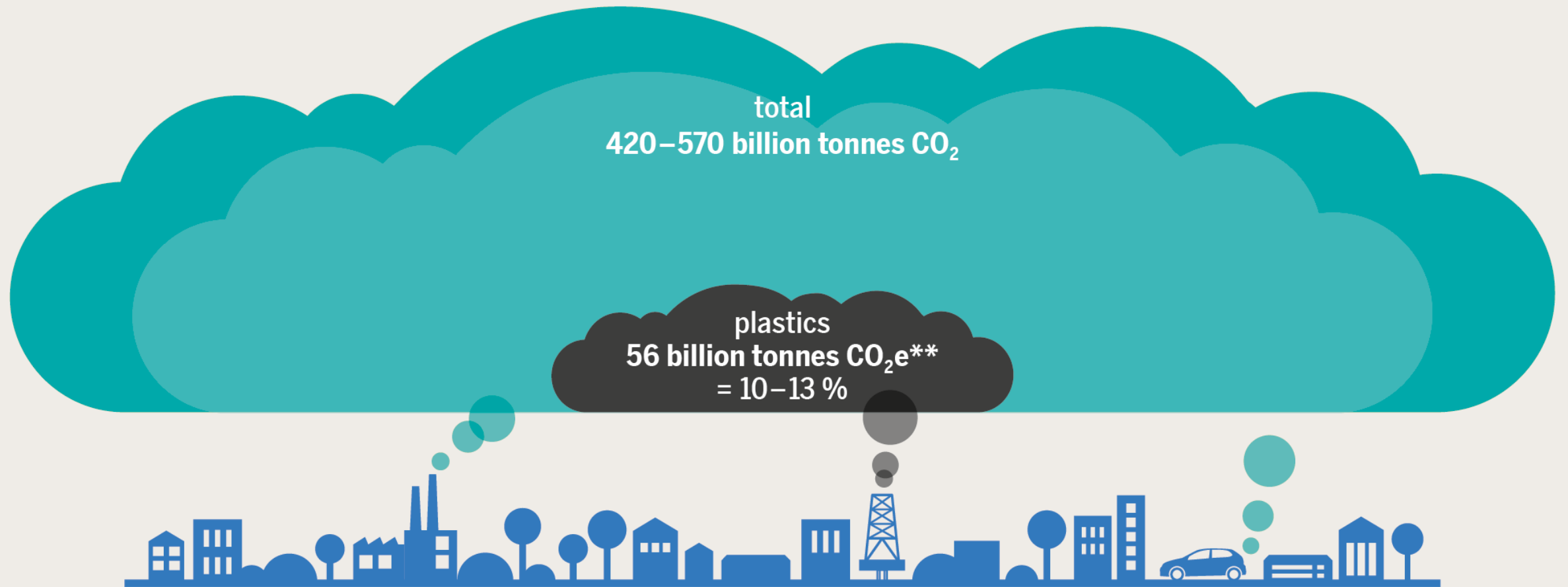
Usage by industrial sector, total volume 438 million tonnes, each symbol represents 1 million tonnes, 2017



*Mostly single use

THE THREAT TO THE WORLD'S CLIMATE POSED BY PLASTIC

Projected share of CO₂ emissions from global plastic production, maximum budget to meet **1.5 degree warming target*** by 2050

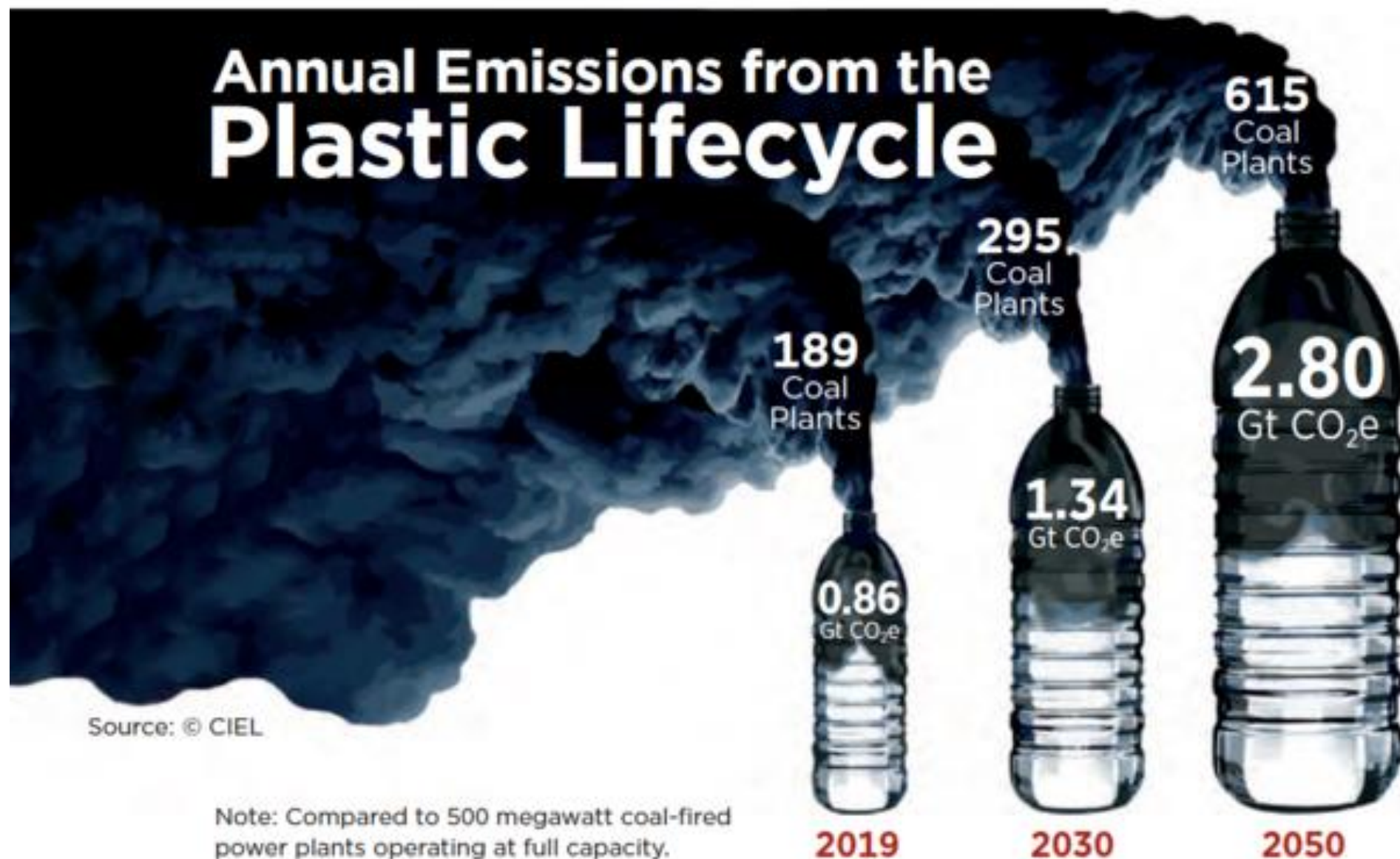


* In 2015, the international community agreed to limit global warming to well below 2 degrees Celsius and to pursue 1.5 degrees Celsius compared with the pre-industrial times.

** CO₂ equivalents: unit of measurement for standardizing the climate impact of different greenhouse gases.

FIGURE 1

Emissions from the Plastic Lifecycle

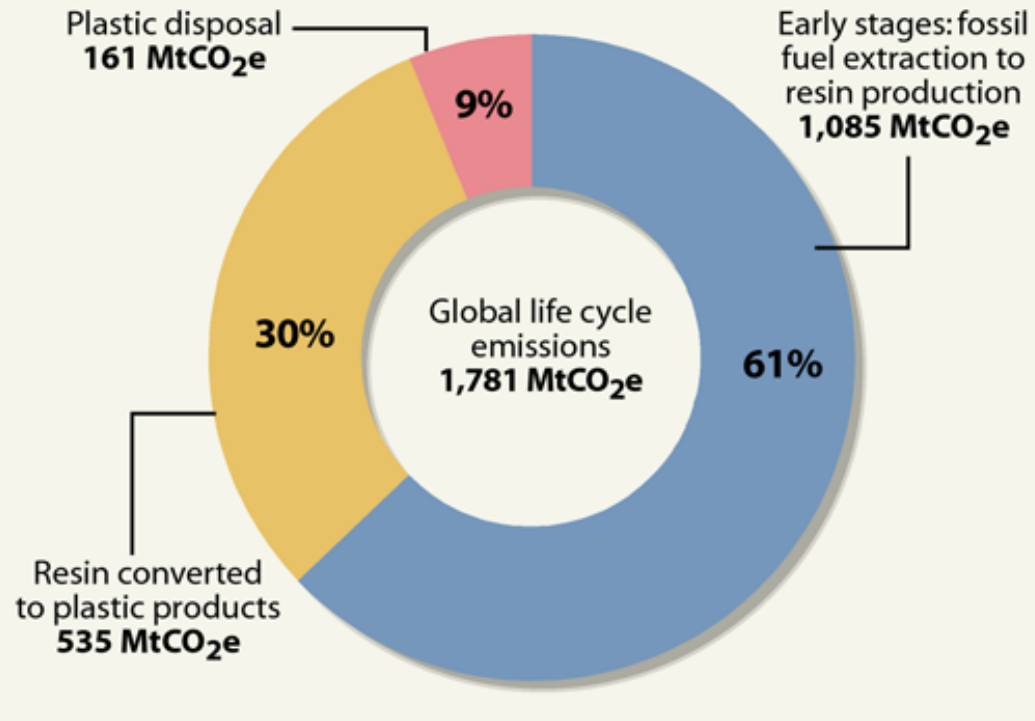


Plastic's Life Cycle Greenhouse Gas Emissions

Looking at the entire life cycle of fossil fuel-based plastics today, nearly two-thirds of its greenhouse gas emissions are produced in the early stages, from fossil fuel extraction through the production of resin, research shows. Converting resin to pipes, bottles, bags and other products generates just under a third of its emissions. The remainder comes from the disposal phase.

LIFE CYCLE EMISSIONS OF FOSSIL FUEL-BASED PLASTICS

In metric tons of CO₂ equivalent, 2015



SOURCE: Jiajia Zheng and Sangwon Suh, 2019

PAUL HORN / InsideClimate News

Other Bills

Ask Only Policy on Straws – Delegate Love (reintroducing from 2019)

Hotel Toiletry phase-out – Delegate Love (mirroring California’s legislation)

Ban on mass balloon releases – Senator Lam

Waste:

Organic Waste Generator Bill, Removal of Incineration Subsidies, Delegate Charkoudian

Bill focusing on MDE reporting transparency and clarity - Delegate Smith

Others TBD in a zero waste package, green new deal package

Questions and Comments

Ashley Van Stone

ashley@trashfreemaryland.org → Shane Robinson, shane@trashfreemaryland.org



Trash Free Maryland



TrashFreeMD



TrashFreeMD

www.trashfreemaryland.org